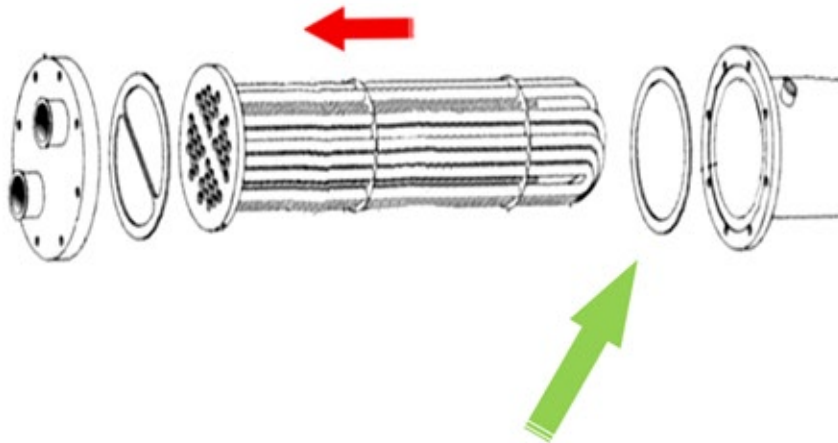


Halve The Time To Replace Heat Exchanger Shell Side Metal Gasket!

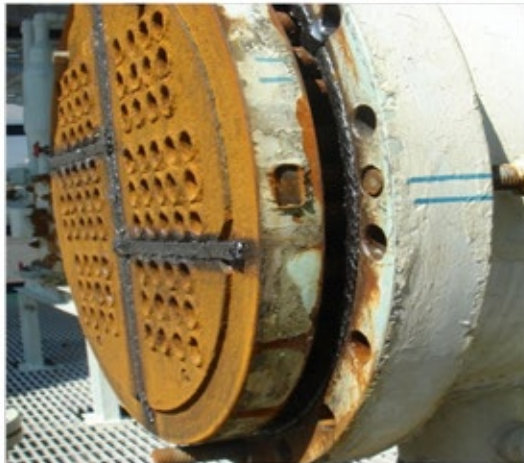


Is this how to replace the Shell Side Metal Gasket?

- It takes too much time
- It takes lot of labour
- It needs a crane
- It cost too much money and time



**Fast Emergency Turn-Around,
No Need for Custom Gaskets.**



Move Tube Bundle Forward Slightly to Remove Old Gasket



Install New SLADE Joint Sealant In-situ



Compress SLADE Joint Sealant to Shape and Seal

Above Fast Emergency Repair Procedure Is Proven In Many Installations.

No Need To Pull Out Tube Bundle!



Exclusively Marketed by: Goldspark Pte Ltd
Blk 1014 Geylang East Ave 3 #06-238 Singapore 389729
Tel: +65 8835 3702 Email: sales@goldspark8.com
Website: www.goldspark8.com